



Campus Master Plan for Shorter College

The master plan positions the campus to be a **new landmark** for North Little Rock in addition to being an **asset for the Rock Island neighborhood**.



Shorter College is re-imagining education and holds building assets scattered throughout the neighborhood. The College will enhance its existing environment to support academic excellence, residential student life, and new forms of community engagement.



Before

Looking at the existing entry to campus and the visual dominance of parking lots.



Master Plan Principle 1

Restructure the campus image from an automobile-oriented commuter college to a residential college that reflects a unique sense of **place, invitation, and purpose, invoking a strong tradition of HBCU pride.**



Before

Looking at the existing open space system of campus.



Master Plan Principle 2

Develop the campus fabric as a neighborhood oasis of **interconnecting indoor and outdoor rooms** where students and residents alike find community and a sense of belonging.



Recreation Center

Students Services Center

Big Porch

Arrival Court

Tyree Hall

Bishop Lindsey Avenue Elevation



Administration

Instruction

Ballroom/Lecture Theater over Parking

Athletic Gym

Sixth Street Elevation

Master Plan Principle 3

Articulate secure **campus edges** supported by building frontages that are both **gateways** and **spaces for sociability**, and compatible with **neighborhood scale and character**.



Bus Stop

Tyree Hall

Administration

AME Headquarters

Locust Street Elevation

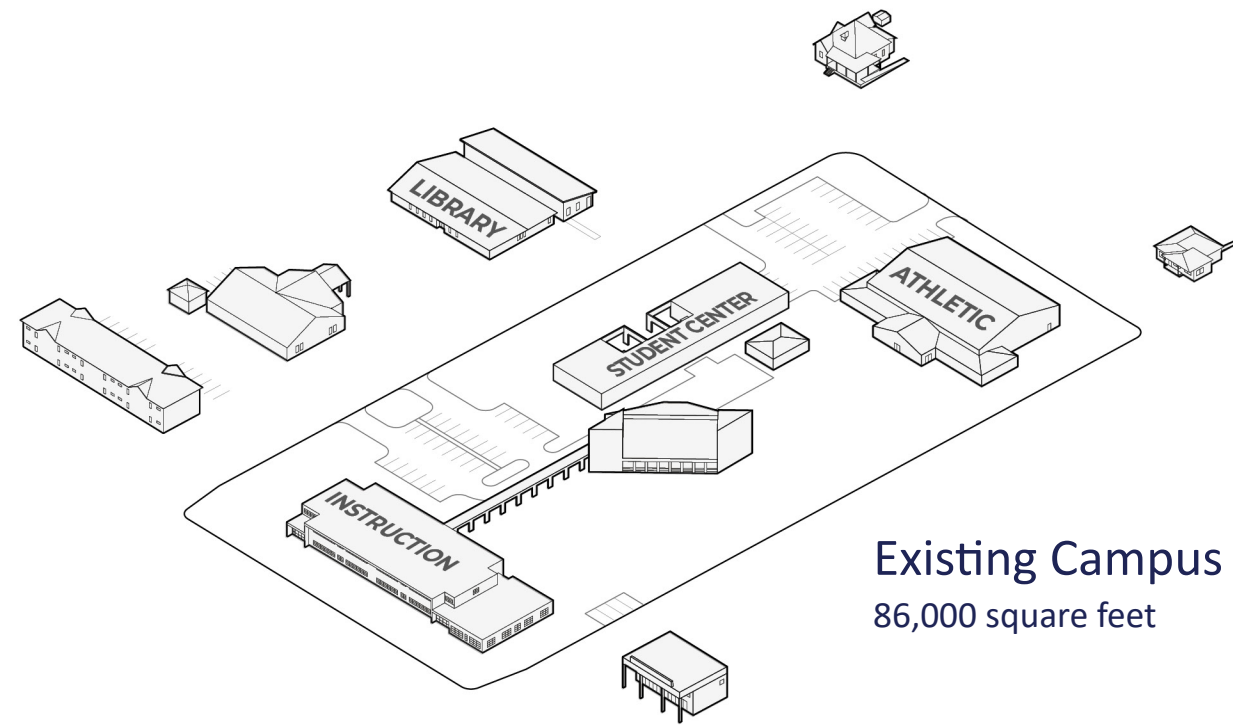


Athletic Gym

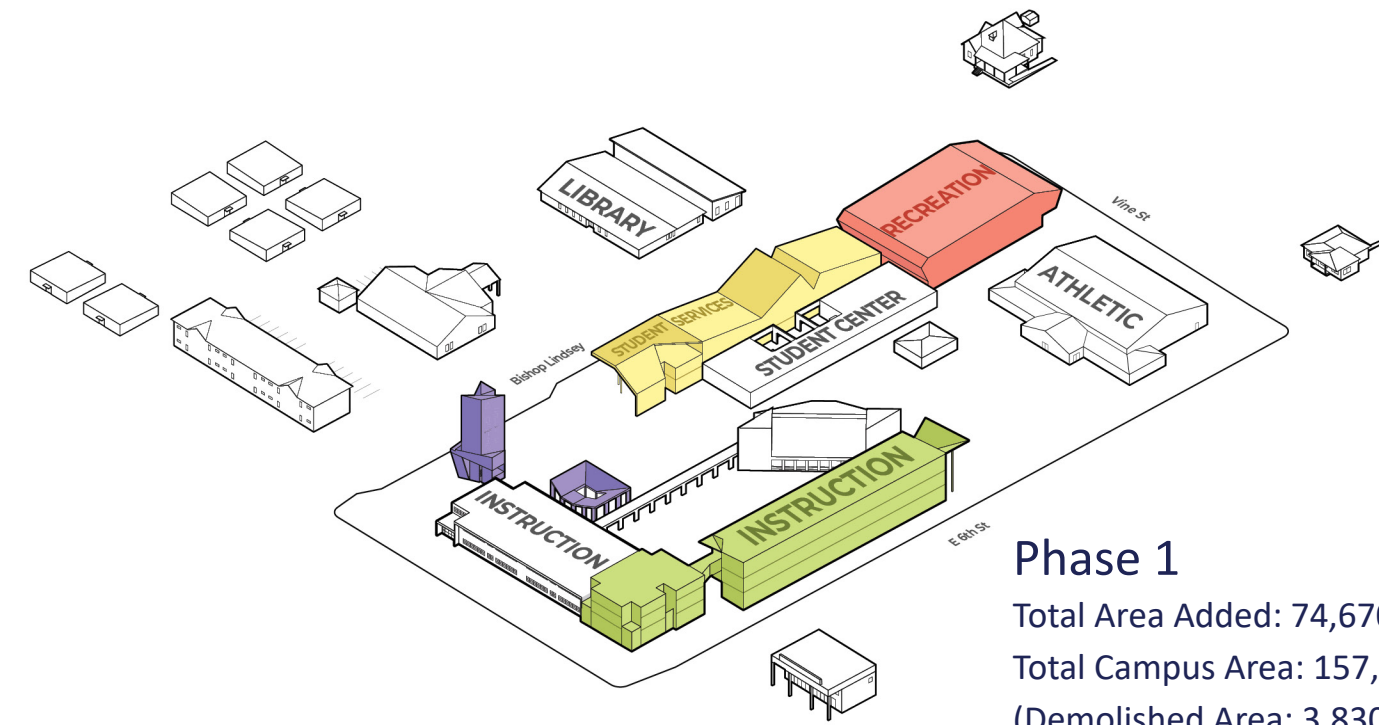
Recreation Center

Vine Street Elevation

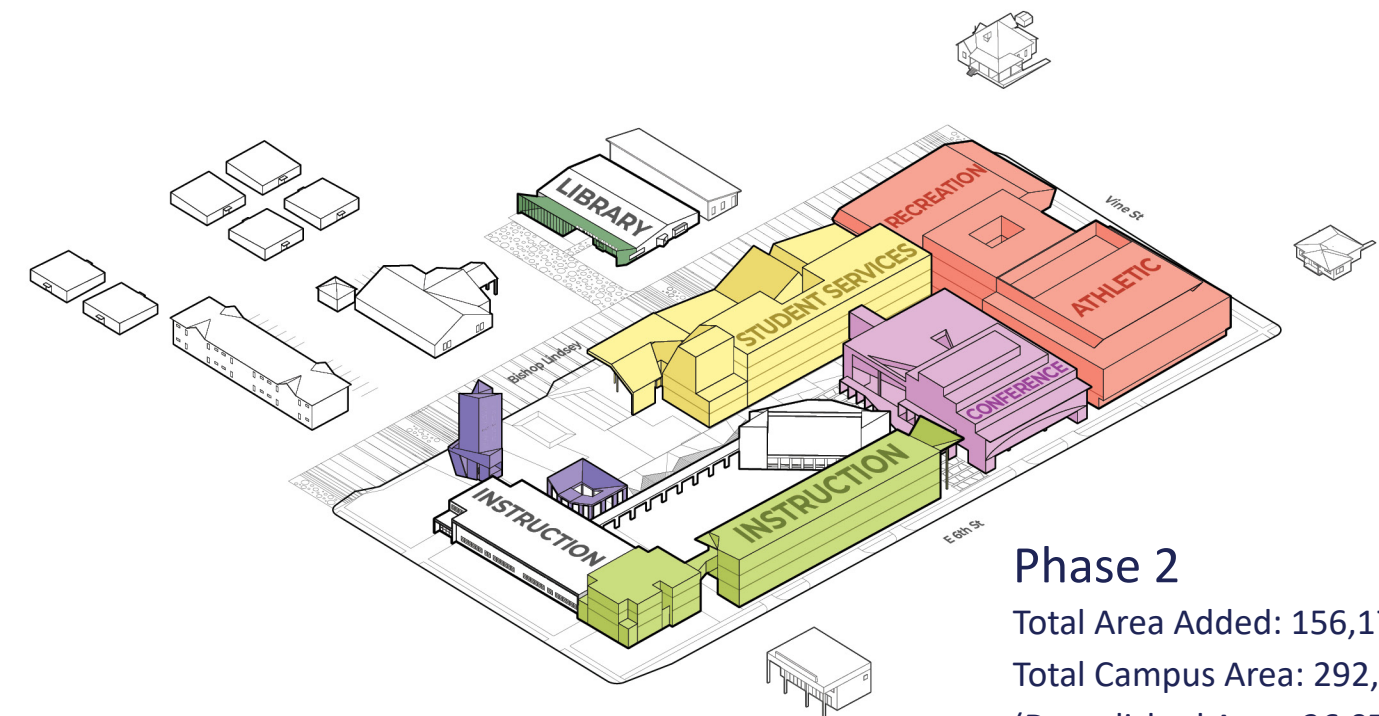
Campus edges also tie the neighborhood together through Shorter College's building material palette: brick, metal, and synthetic stucco.



Existing Campus
86,000 square feet



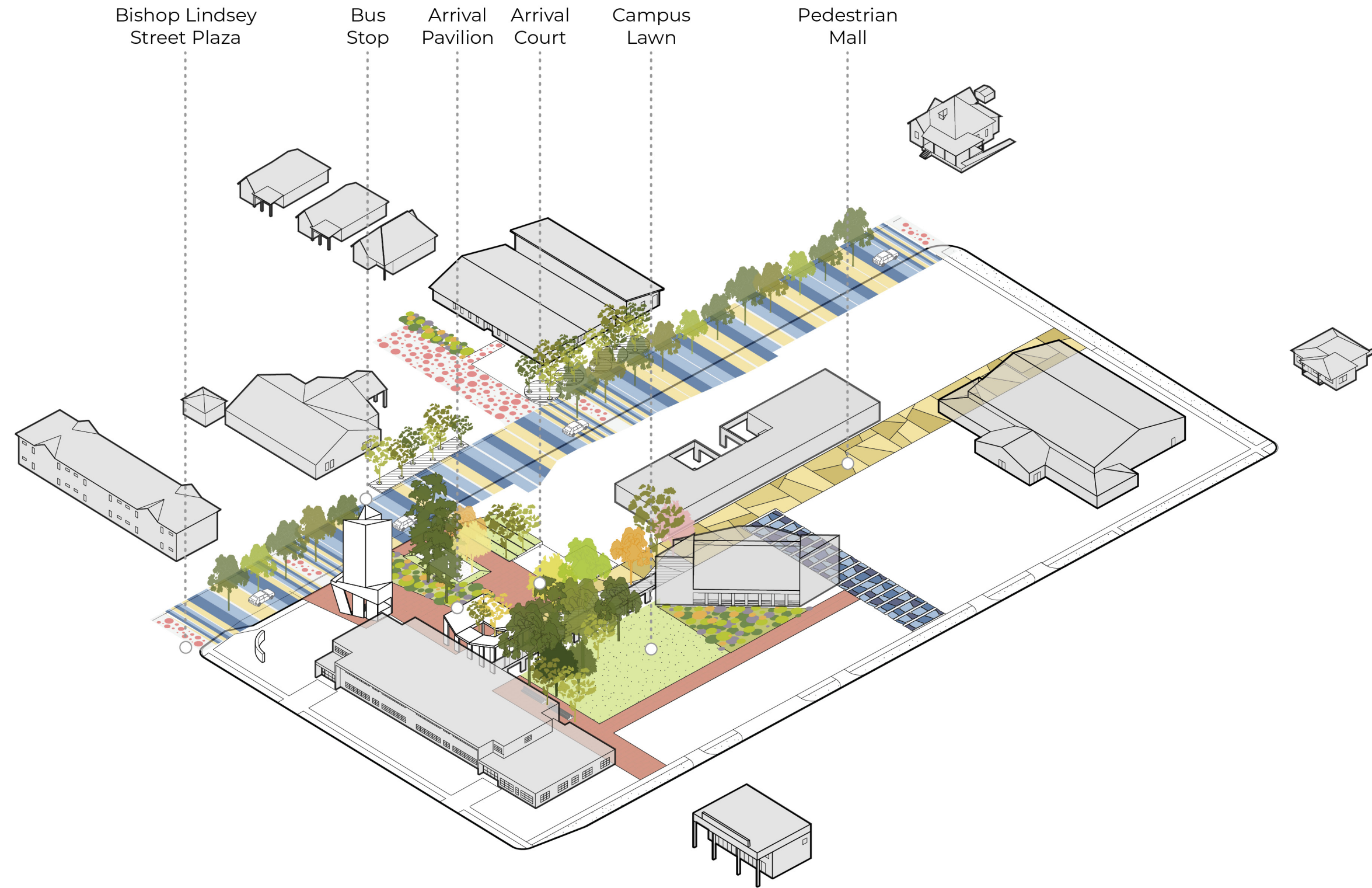
Phase 1
Total Area Added: 74,670 square feet
Total Campus Area: 157,110 square feet
(Demolished Area: 3,830 square feet)



Phase 2
Total Area Added: 156,170 square feet
Total Campus Area: 292,210 square feet
(Demolished Area: 26,070 square feet)

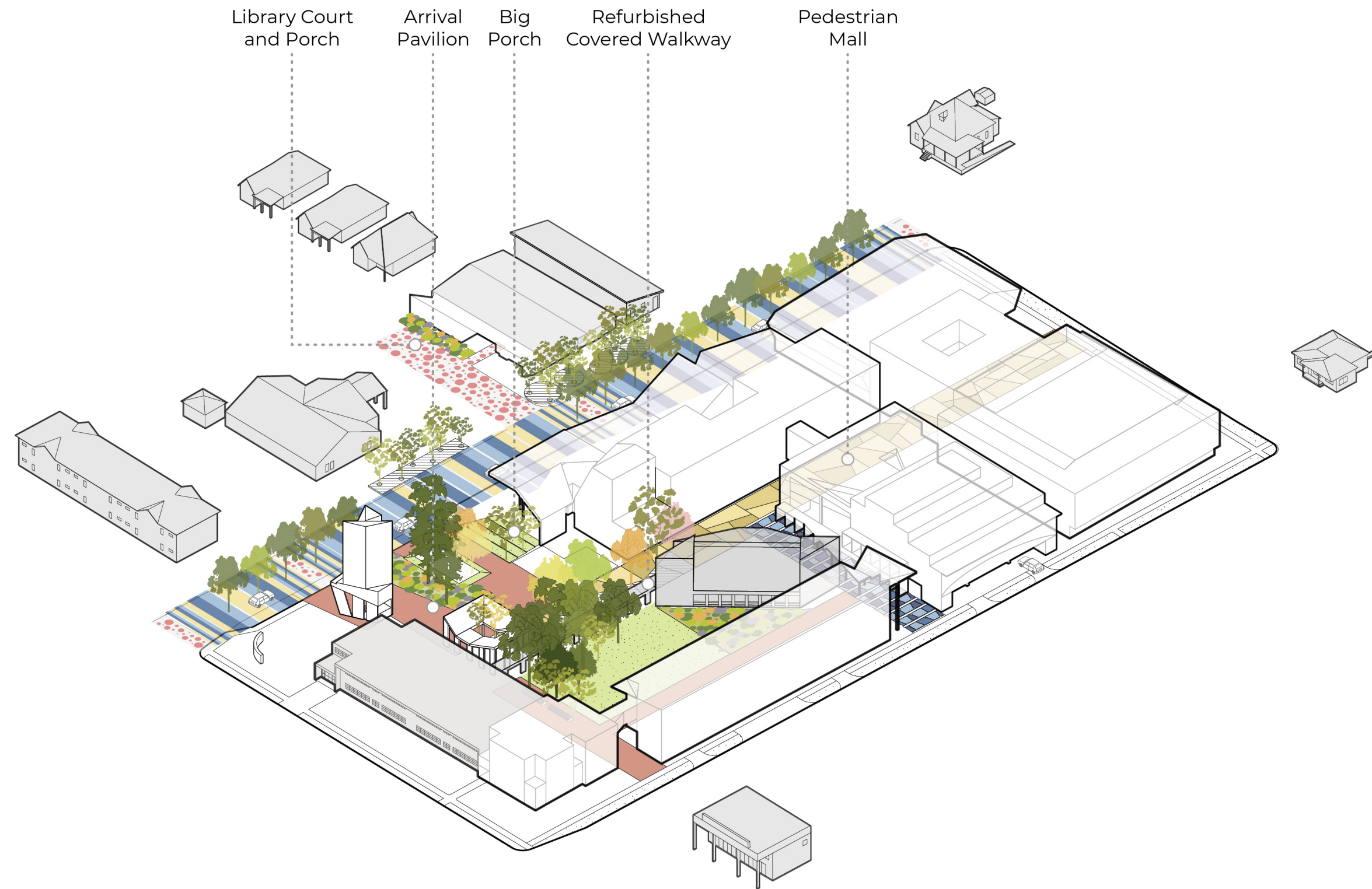
Master Plan Phasing

The campus, currently at **86,000 square feet**, will support a tripling of its building footprint. The master plan design is **modulated to accommodate incremental development** as funding opportunities permit.



Master Plan Urban Framework

The plan articulates a new sequence of outdoor campus rooms: an Arrival Court, a Pedestrian Mall, a Boardwalk, and a Campus Lawn. The installation of a new Street Plaza on Bishop Lindsey Avenue fronting campus will calm fast-paced traffic. This new outdoor room features enhanced pedestrian facilities that support new buildings.



... with the new buildings

The Street Plaza flanks a campus Arrival Court with a Big Porch and refurbished covered walkway connected to a new Pedestrian Mall. The Mall is an internal spine connecting campus buildings and gateways. A new campus building perimeter features strong gateways and building frontages on neighborhood streets.



Campus Site Plan

The **10-acre campus** sits in a working-class neighborhood within a larger industrial district east of downtown, entailing both adaptive reuse and intensification of the existing campus' building footprint.



Student Services



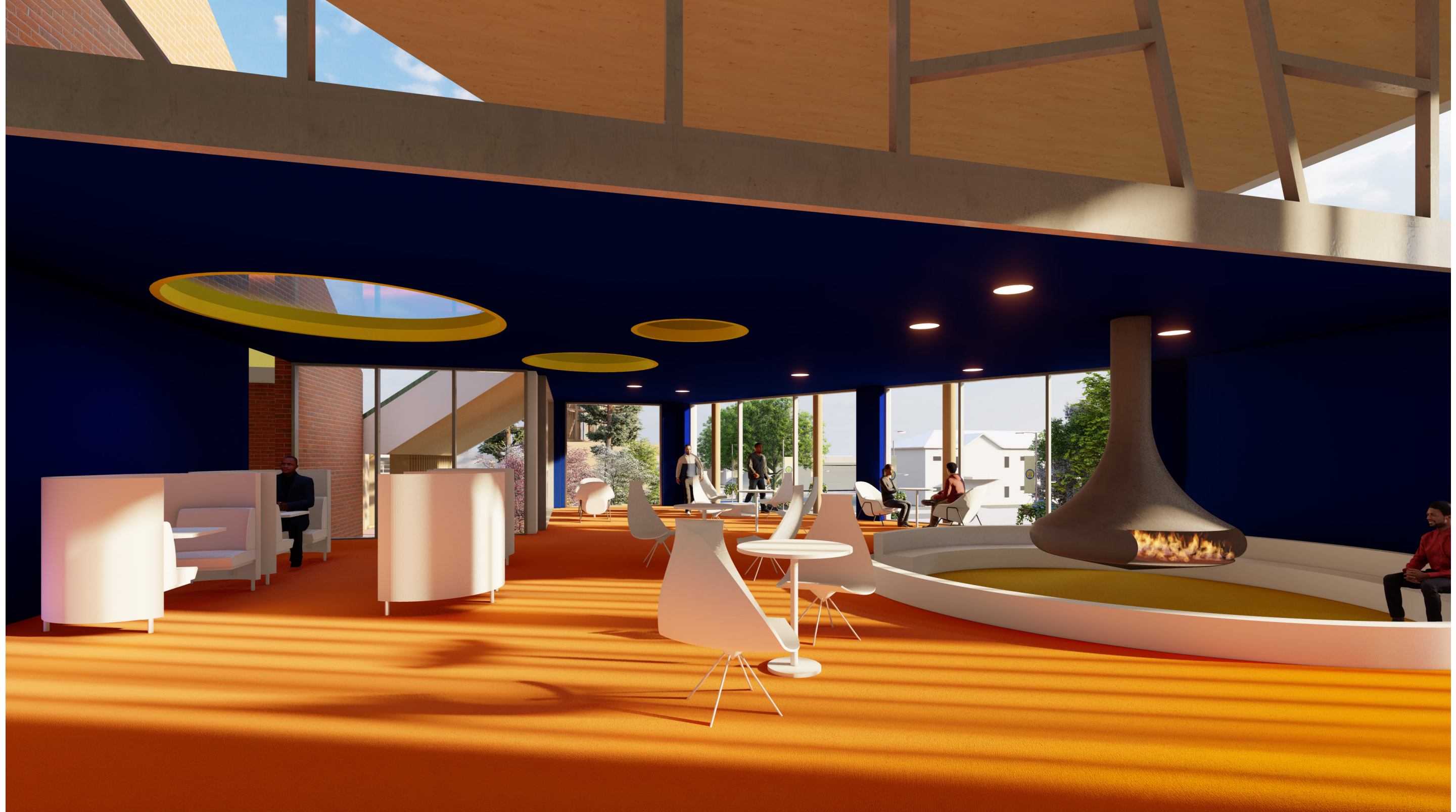
A three-story urban porch at the Student Services Center shares the skyline with the **Campus Chapel** and the **Bus Stop/Campus Sign**. The Big Porch constitutes one of many outdoor learning and fellowship spaces.



The master plan sponsors a **campus building frontage vocabulary** that connects urban and architectural scales, interior and exterior spaces, and ground and sky, expressing a general sense of invitation and connection to its neighborhood.



The new Student Services Lobby on Bishop Lindsey Avenue **retrofits the existing entry courtyard as a node** around which interior social spaces are organized.



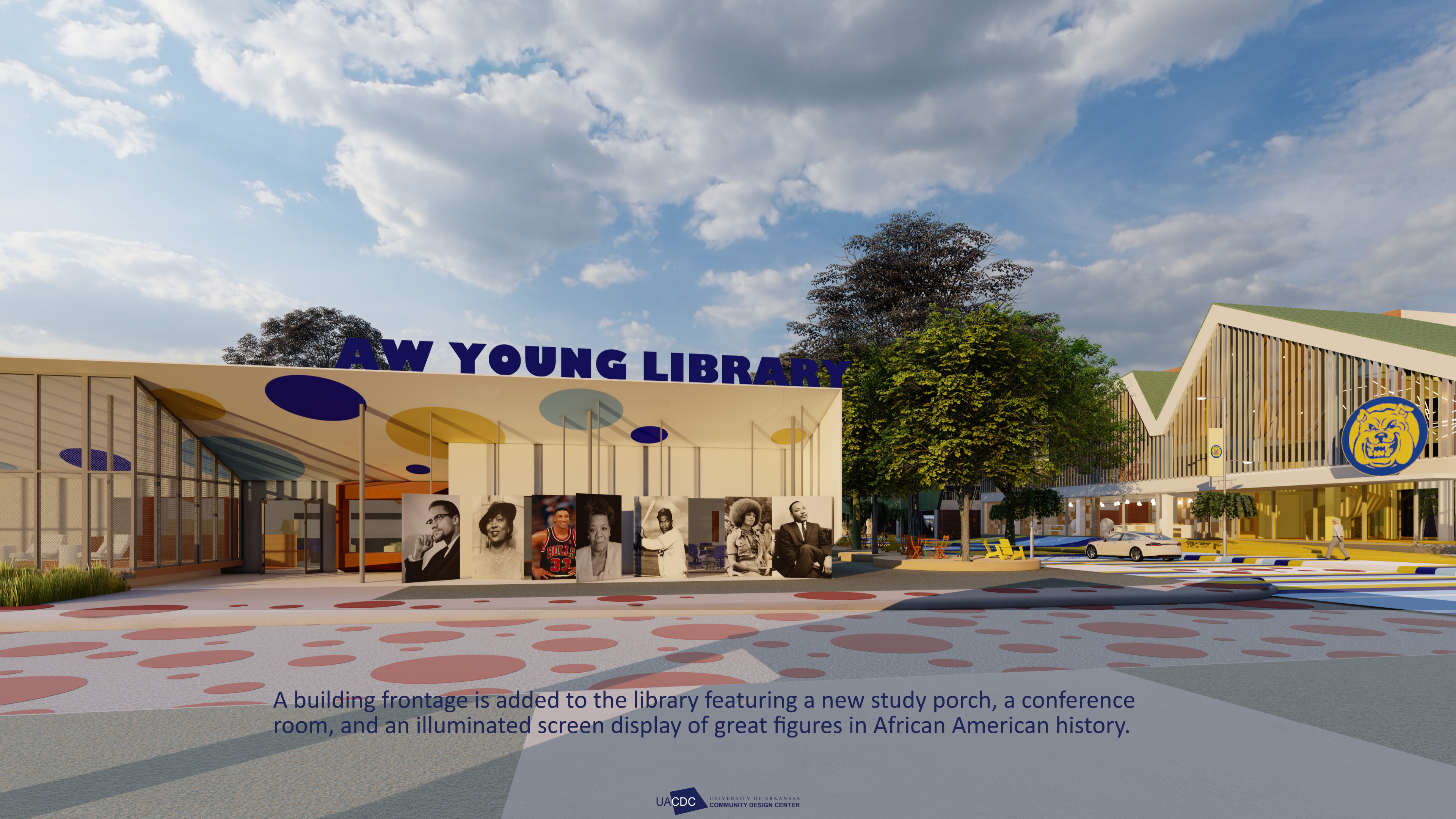
A student lounge on the west end **overlooks the Big Porch** and Bishop Lindsey Avenue.



A two-story Dining Hall looks onto the Pedestrian Mall, with intimate seating areas that spill over into adjacent spaces across and above.



An Interfaith Space with Chapel above overlooks a third-story roof garden. The room and its overflow area can accommodate different seating orientations.



AW YOUNG LIBRARY

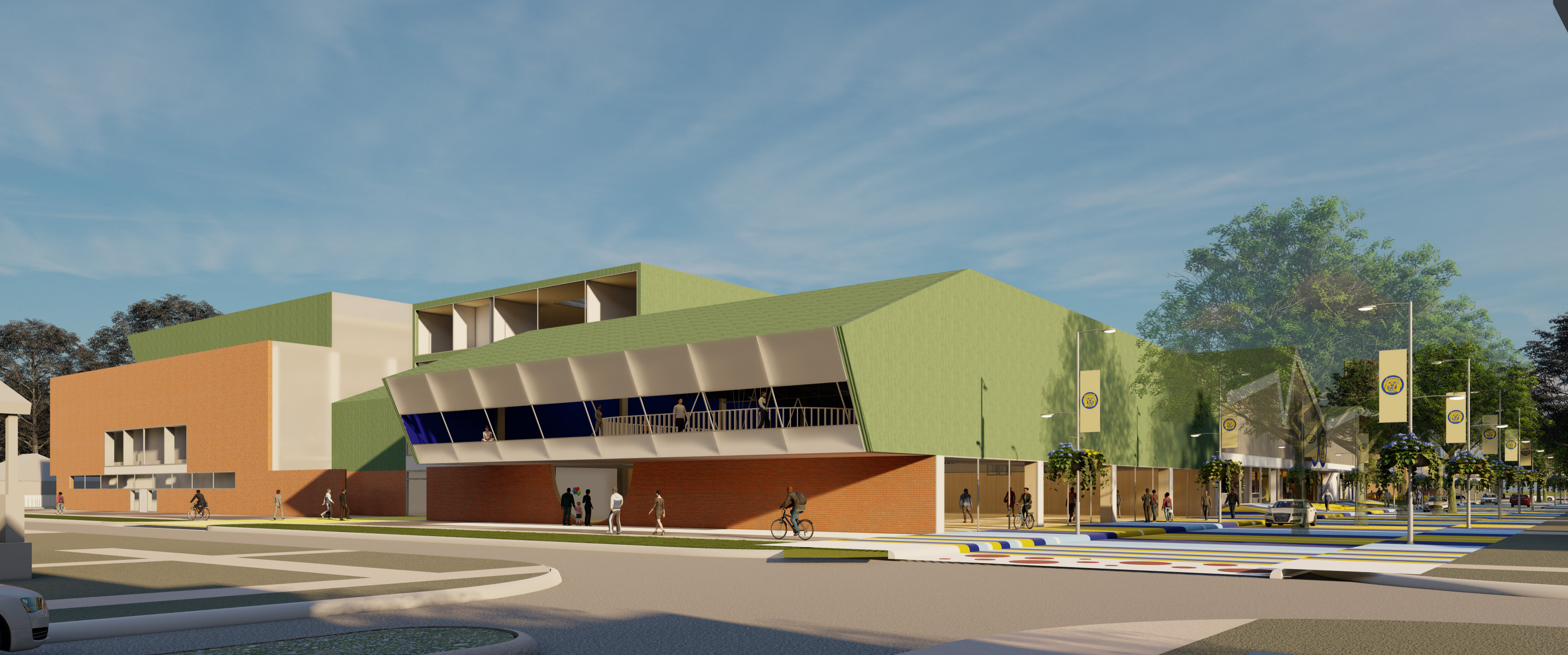


A building frontage is added to the library featuring a new study porch, a conference room, and an illuminated screen display of great figures in African American history.



© 2023 Google

Athletics



Even for big box activities like the **recreation center**, building envelopes **reveal interior activities**, adding vitality to streets—in this case, to the BL Street Plaza.



Inside the Recreation Center gym and **running track above** for **students and staff**, both levels have views out to Bishop Lindsey Avenue.



The gym for **official athletic events** is located on Sixth Street, enlivening the street with game-day events and celebrations.



The Athletic Gym seats **500 spectators** with additional capacity for press and media box functions.



© 2023 Google

Ballroom/Lecture Theater over Parking



A Ballroom **accommodating 300 people with conference facilities** adjacent to the new Instruction Building on Sixth Street. The campus building perimeter features distinctive gateways, while building frontages create interesting places on neighborhood streets.



Inside the Ballroom looking toward its western porch and the Campus Lawn beyond with the Lecture Theater to the right.



Instruction and Administration



A new Administration wing for Tyree Hall at the corner connects via a skybridge to the new Instruction Building housing Nursing, Industrial Labs, classrooms and centers, and a rooftop greenhouse.



Looking south from the Arrival Pavilion onto the Campus Lawn (Tyree Hall in right foreground) toward Sixth Street beyond.



Looking east from the Arrival Pavilion and **refurbished covered walkway** onto the Pedestrian Mall with the Boardwalk in the foreground (Student Services Center to the left).



Before the master plan



After

The campus master plan reflects the **generosity, hospitality, and deep fellowship** that are the hallmarks of America's Black churches and schools.